

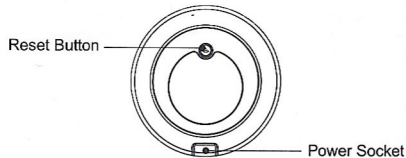
WiFi Smart Remote IR Controller User's Manual



Please read this manual carefully before using the product and keep it safe

Product Introduction

Users can realize the intelligent application scene of ordinary appliances in home by adding a smart remote controller.



Using Device

Connect the device to the power source while ensuring that the phone is connected to the 2.4GHz band WiFi.

Download App

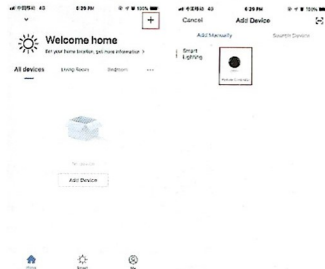
Search "Smart Life" in the app store or scan the QR code to download and install the app.

If you are downloading and using the app for the first time, please click the "Register" button to register your account; if you have an account, click the "Login" button.



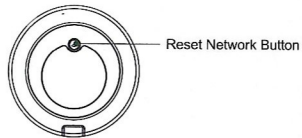
Add the device

- Open the app to the "My Home" page and click on "Add Device";
- Select "Remote Controller" in the "Device List" and add by following prompts;



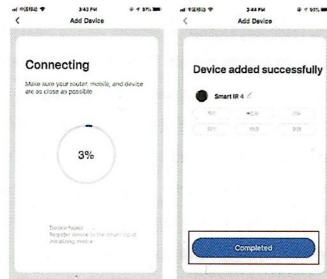
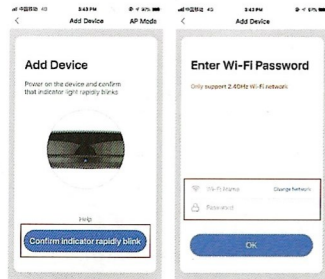
Network Reset (Default mode)

- Press and hold the reset button for more than 5s until the network indicator flashes. Follow the APP instructions to add device;



- Go to the "Add Device" page and click the "Confirm indicator is flashing" button; enter WI-FI password;

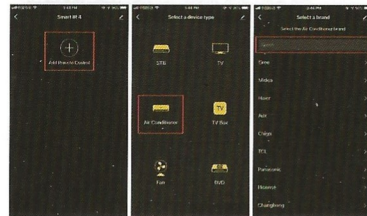
- Connect the device (the device cannot be interrupted when connected), click "End" into the "button after the device is successfully added;



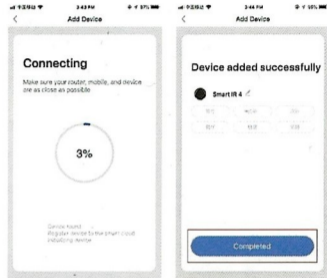
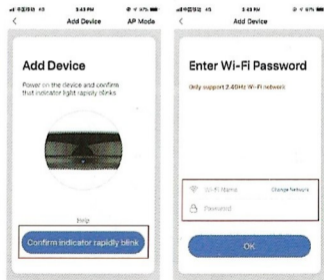
- The device can be found in the My Home list once the device has been successfully added.

Add a fixed remote control

- Adding fixed-class electrical remote control such as air-conditioning remote control, TV remote control, set-top box remote control, etc, based on the existing classification, this method of adding remote control is simple and fast, but limited by the code database data. It can not guarantee that the electrical appliance can be 100% controlled by the infrared remote control, The appliance may not be able to support control.



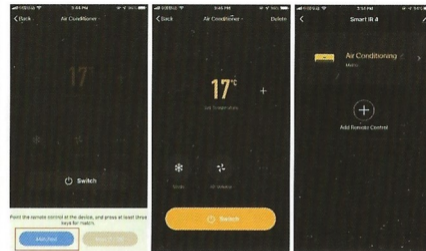
- Connect the device (the device cannot be interrupted when connected), click "End" into the "button after the device is successfully added;



- The device can be found in the My Home list once the device has been successfully added.

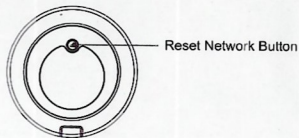
Add a fixed remote control

- Adding fixed-class electrical remote control such as air-conditioning remote control, TV remote control, set-top box remote control, etc, based on the existing classification, this method of adding remote control is simple and fast, but limited by the code database data. It can not guarantee that the electrical appliance can be 100% controlled by the infrared remote control, The appliance may not be able to support control.

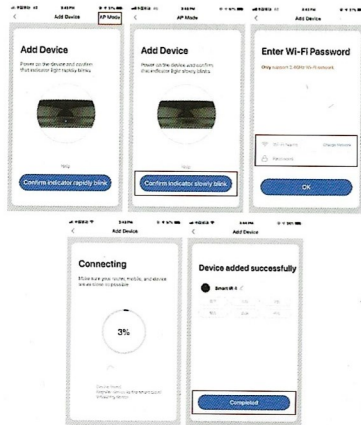


Network reset (Compatibility mode)

- Press and hold the reset button for more than 5s, the indicator light flashes blue and enter the flashing state; press and hold the reset button for more than 5s to enter the slow flash mode, and follow the APP instructions to add equipment;



- Go to the "Add Device" page and click the "Confirm indicator is flashing" button; enter WI-FI password;
- Connect the device (the device cannot be interrupted when connected), click "End" into the "button after the device is successfully added;
- The device can be found in the My Home list once the device has been successfully added.



Add a fixed remote control

- Adding fixed-class electrical remote control such as air-conditioning remote control, TV remote control, set-top box remote control, etc, based on the existing classification, this method of adding remote control is simple and fast, but limited by the code database data. It can not guarantee that the electrical appliance can be 100% controlled by the infrared remote control, The appliance may not be able to support control.



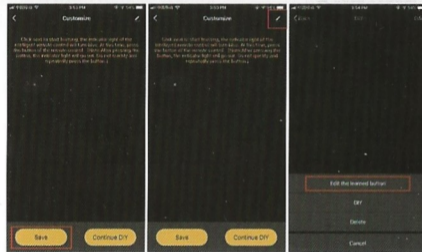
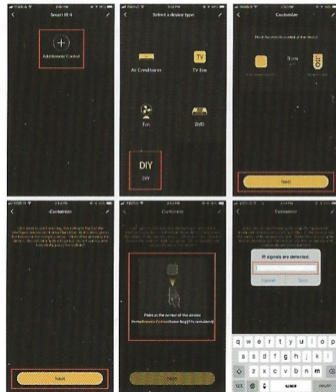
DIY Function

If you can't find the remote control for controlling the appliance through the above two methods, you can use the learning function (DIY) to get the smart remote control ability to control the appliance.

- When the infrared is emitted, the indicator light flashes to indicate normal operation.
- The infrared launch tube is in the area above the indicator light. Please point the device remote control 3cm away at the indicator area when learning (DIY).
- 19. When learning (DIY), the indicator light is always on, the indicator light is off when the detection signal is successful.

*This version only supports 38k bit rate signal learning. If you find that the smart remote control cannot accept the command of the electric remote control, the code rate signal of the electric remote control may not match. At this time, the electric remote control command cannot be learned. In order to ensure that the smart remote control accepts the command normally, do not press the electric remote control to send a signal to the smart remote control, short press.

DIY operation instruction



Product Parameters

Product model:

Infrared direction: multi-directional infrared

Power input: DC 5V/1A

Infrared distance: ≤10m (affected by the environment)

Standby power consumption: ≤0.5W

Working temperature: 0-50°C (32-122°F) Connection method: 2.4GHz 802.11b/g/n

Working humidity: ≤85% RH

Support device: Android 4.0/ios 8.0 and above

Infrared frequency: 38K

Product size: 64*64*24 mm

Third Party Control

- Refer to the control platform configuration mode to enter the smart remote controller.
- Third-party control is currently supported (Continuous update).



Precautions

- This product is for indoor use only. Do not use it in humid or outdoor
- This product is not a toy, please keep children away from this device
- Turn off the power before cleaning the product. Do not use liquids, spray cleaners or wet cloths for cleaning
- Keep away from water and heat sources while using to avoid damage to products and potential safety hazards